

# Professional Learning

Expert Guidance.  
Real-Time Support.  
Immediate Impact.





“

“The coaching and training we received were excellent. They simplified the program’s process, which helped alleviate my anxiety about introducing this new curriculum. The enCORE representatives are fantastic; they are always eager to assist with the curriculum’s implementation.”

**Erin Rotanz**  
Special Ed. Teacher,  
Patchogue-Medford School District

# Professional Learning Built on Partnerships

We believe professional learning is far more than a one-day workshop; it’s a partnership built on trust and a shared commitment to student success. Designed to help educators move beyond just “using the program,” TeachTown’s professional learning offers a collaborative, hands-on, research-backed approach, building lasting confidence with practical support.

**Whether we partner onsite or virtually, our professional learning provides a structured, supportive pathway that includes:**



## TRUSTWORTHY, EXPERT GUIDANCE

Our specialists — including Board Certified Behavior Analysts (BCBAs), Ph.D.s, and former educators — provide research-backed curriculum expertise and proven strategies that work.



## REAL-TIME, JOB-EMBEDDED COACHING

Structured coaching cohorts that include follow-up support and expert sessions delivered right in the classroom.



## CLASSROOM-READY STRATEGIES, IMMEDIATE IMPACT

Practical strategies educators can implement in their classrooms immediately, leading to faster teacher adoption and a direct impact on student growth.



## SUPPORT, WHEN AND WHERE YOU NEED IT

Access to an extensive Professional Learning library full of self-paced, asynchronous courses and implementation support — complemented by live webinars and topic-specific training events.

# Trusted Guidance from Experts Who Understand

When you partner with our **Customer Enablement Specialist team**, you are collaborating with individuals who truly understand your world. This team is made up of dedicated experts, including Ph.D.s, BCBA's, and former educators with experience in special education. They have walked in your shoes, so the guidance you receive is never just theory; it's grounded in the practical realities of the classroom and what truly works for students.

## Professional Learning with Targeted Support



“Perception of value drives your return on investment. Once your teachers see the value in the product, whether that is through the training and implementation process, or use of the curricula, the return on investment will grow.”

**David Avalos**

Special Education LID Specialist,  
Pflugerville Independent School District

In other words, your TeachTown curricula holds the most value when your teachers feel confident executing it with fidelity every day. That's why we've designed our professional learning courses to ensure your educators gain the practical skills they need to support every student using TeachTown programs effectively, right from the start.

# Training Courses

---

## Teaching and Learning 100

Includes in-depth assessment and practice on all sections of the Moderate to Severe Teaching and Learning (MSTL) Framework, including introduction to instruction, classroom setup, classroom management, blended learning, and data collection.

**Note:** *This training is primarily focused on new teachers or teachers new to the field of special education; however the training also benefits returning teachers with supporting areas like data collection or the physical environment of their classroom.*

---

## enCORE 101, 102, 103 Training

A 3-part training series that provides educators with everything they need to know to begin teaching with enCORE in their classroom. enCORE 101 helps teachers identify and assign the right learning level for each student, deliver instruction using lesson plans, materials, and teacher-led technology lessons, log students in via usernames/passwords or SSO, and create a daily implementation schedule. enCORE 102 supports teachers in assessing student progress through unit and benchmark assessments and in collecting and analyzing data across all subject areas. enCORE 103 helps teachers align enCORE lessons to existing IEP goals, use enCORE data to inform IEP development, and provides guided time during training to enter goals and align lessons with support from a TeachTown trainer.

---

## enCORE Intervention Program Training

Provides educators with an overview of the supporting interventions — Language Accelerator (Advance package only), TeachTown Basics, Transition to Adulthood, and Social Skills — including their practical use within a classroom schedule and best practices for implementation.

---

## enCORE BOY Training

This training is specifically for educators who have already completed the enCORE 101-103 series in a previous school year. The session focuses on setting up TeachTown accounts for the upcoming year, preparing and assigning Benchmark Assessments, assigning lessons to IEP goals, and reviewing best practices.

---

## Launch for PreK 101, 102 Training

This training offers educators an in-depth exploration of all instructional components (including Hello Circle, Story Time, Goodbye Circle, the Centers Guide, and Activity-Based Lesson Plans) and provides guidance on the program's data collection tools, such as the Benchmark and Observational Assessments. The sessions cover the basics of using Launch for PreK, from initial teaching implementation and inputting IEP goals, through the process of data collection and assessments, and finally to generating and understanding reports for progress monitoring. Each training segment will expand on the tools offered in the program.

---

## Launch for PreK Intervention Program Training

Provides educators with an overview of the supporting interventions — TeachTown Basics, Language Accelerator, and Social Skills — including their practical use within a classroom schedule and best practices for implementation.

---

## enCORE Paraprofessional Training

Provides paraprofessionals with training on how to support the implementation of enCORE in the classroom, including an overview of the program, guidance on supporting educators with data collection, and best practices for running small-group instruction.

---

## enCORE Administrator Training

Designed for special education administrators, building principals, and related service providers, this training includes an overview of how enCORE is used in the classroom and provides tangible checklists for walkthroughs and implementation follow-up.

# Expert Coaching for Sustained Classroom Success

Effective, long-term implementation is a process, not just a single training day. To help your educators successfully bring new strategies and resources into their daily practice, we offer dedicated instructional coaching.

Whether onsite or virtual, our expert coaches join your educators in their classrooms; working together to collaboratively model lessons, provide individualized feedback, and bridge the gap between initial training and sustained, effective practice. This partnership builds confidence and makes daily instruction more effective and sustainable.



“The in-person coaching was a tremendous help because we had on-site coaches that came in monthly so it allowed one-on-one intervention.”

**Ellen P.**

Principal of San Mateo County of Education Special Services Program

## TEACHTOWN COACHING COHORT LEARNING CYCLE

This model provides continuous, hands-on support delivered directly in your educators’ classrooms, ensuring theory is immediately put into practice.

### Modeling

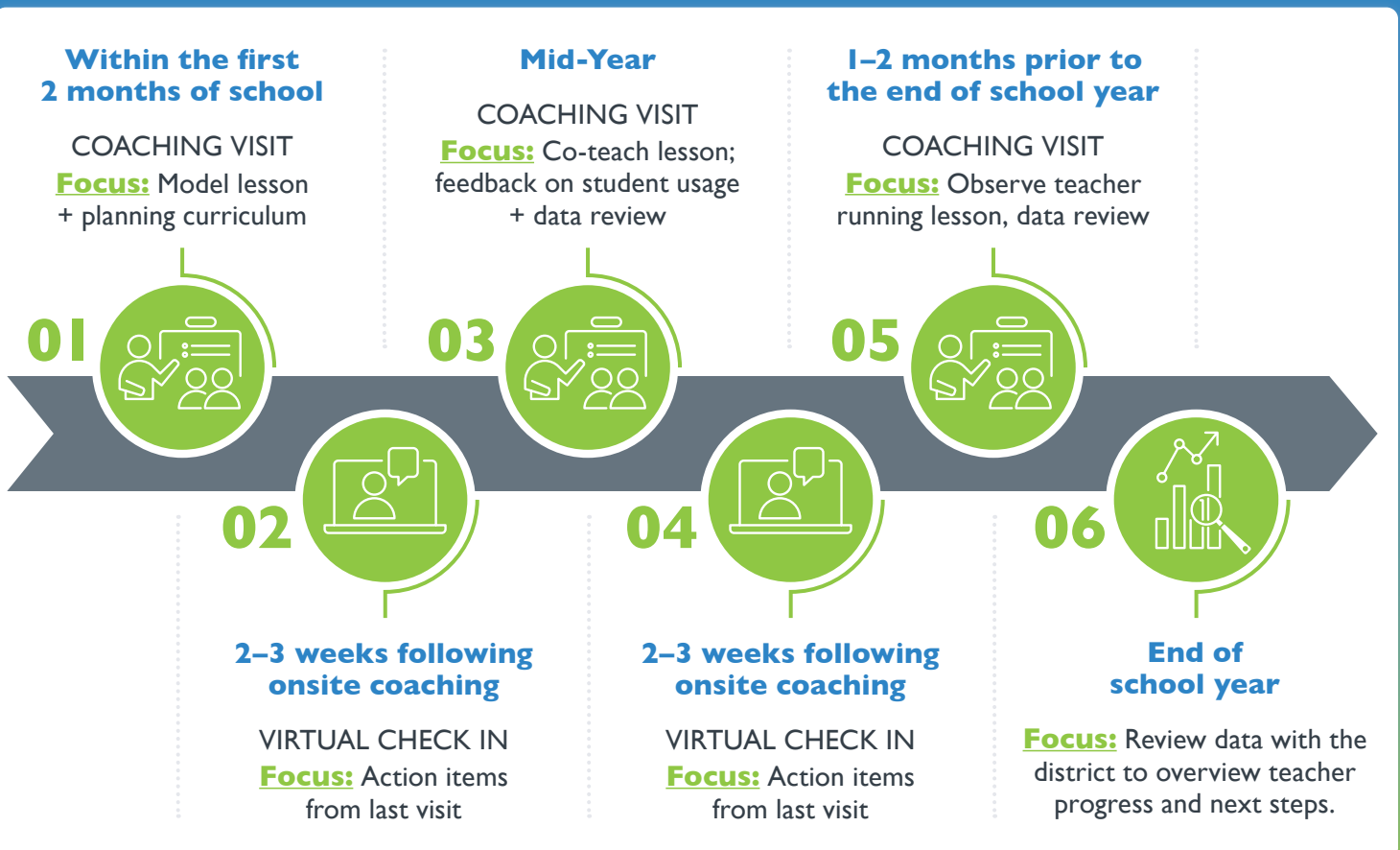
Our Customer Enablement Specialist models a lesson using TeachTown in the classroom.

### Co-Teaching

The specialist and educator co-teach the lesson with guided support and real-time feedback.

### Feedback Sessions

Dedicated sessions for reviewing data, establishing best practices, and planning next steps.





# Your 24/7 Partner for Practice and Growth

Supporting your educator's success is an important priority. We provide a wide variety of asynchronous and on-demand learning opportunities.

## **On-Demand Support When You Need It**

TeachTown's Resource Center gives your team 24/7 access to practical tools for success. Educators can find clear implementation guides, instructional videos, and on-demand training modules, allowing them to get answers, refine their practice, and build confidence on their own schedule.

## **Grow Your Professional Practice**

Explore new strategies, stay current with emerging best practices, and gain practical insights that can be used right away to enhance student learning with our live and on-demand webinars.



# Professional Learning Packages to Meet Your District's Needs

Successful implementation begins with a plan tailored to your district's specific needs. Our team will collaborate with you to provide a professional learning package that directly matches your district's unique goals. This tailored plan includes any combination of our services — from virtual and onsite training to dedicated coaching cohorts for your educators and staff ensuring your team feels confident and supported right from the start.



“After the training, more of the teachers that I support now use [TeachTown] regularly. Once those hesitant teachers participated in the onboarding and training of the curricula, they recognized that TeachTown provides the classroom resources necessary for effective instruction.”

**Meredith Rebeck**  
Special Education LID Specialist,  
Pflugerville Independent School District

**Ready to design a professional learning plan tailored to your district's unique goals?**

**Contact your Account Executive or Account Manager to get started.**



**TEACHTOWN®**