


A photograph of a male teacher with dark hair, wearing a dark shirt, leaning over a desk to assist a young Black student. The student is sitting in a wheelchair, smiling, and looking at an open book. The background is a classroom setting with a bulletin board. The image has a blue and green color overlay.

enCORE

Drive measurable student outcomes with enCORE, a K–12+, standards-first adapted core curriculum for students with moderate to severe disabilities.



All across the U.S., students with disabilities have the right to high-quality curriculum that drives measurable gains in academics and improves adaptive functioning skills.

With award-winning enCORE K–12+, schools now have an opportunity to give their students with moderate to severe disabilities equitable and inclusive access to the general education curriculum.

Finally, our most complex learners have the tools they need to experience academic and personal success.

What Makes enCORE Different?

COMPREHENSIVE AND CORE CURRICULUM, BUILT FOR SUCCESS

With enCORE, everything you need is in one place — a complete, adapted core curriculum across ELA, Math, Science, and Social studies, from Kindergarten through transition years. Scripted, differentiated lesson plans make it easy to deliver high-quality instruction built on evidence-based instructional practices. The expansive and integrated adapted reading library, student workbooks, and hands-on materials bring learning to life.

DATA-INFORMED TEACHING, EVERY DAY

With enCORE, you never have to guess how your students are doing. With Benchmark Assessments, Unit Assessments, and technology-facilitated lessons that automate data collection, enCORE makes it easy to monitor progress towards IEP goals and learning objectives. Students practice right within their zone of proximal development — not too easy, not too hard — helping to minimize frustration, reduce interfering behaviors, and keep learning on track.

FLEXIBLE BLENDED LEARNING TO SUPPORT ALL LEARNERS

enCORE gives you the best of both worlds: engaging, hands-on materials paired with responsive technology. Teachers can flexibly structure lessons to meet diverse learning and behavioral needs, adjust based on classroom support, and seamlessly blend print and tech for maximum impact.

DESIGNED BY EXPERTS, PROVEN TO WORK

Every lesson in enCORE is backed by evidence-based instructional practices and real-world classroom experience. Developed by BCBAAs, PhDs, SLPs, and veteran educators, enCORE utilizes systematic instruction, the Science of Reading, and Applied Behavior Analysis — giving you confidence that the instruction you're delivering works.

Supporting You Every Step of the Way

YOUR PARTNER IN SUCCESS, RIGHT FROM THE BEGINNING

From customized evaluation and implementation plans to extensive professional development opportunities, we tailor everything to meet *your* needs. Whether it's in-person coaching, virtual training, or quick tips from our in-app Resource Center, you'll always have access to expert guidance and training — on your schedule, at your pace. With TeachTown, you're never in it alone.

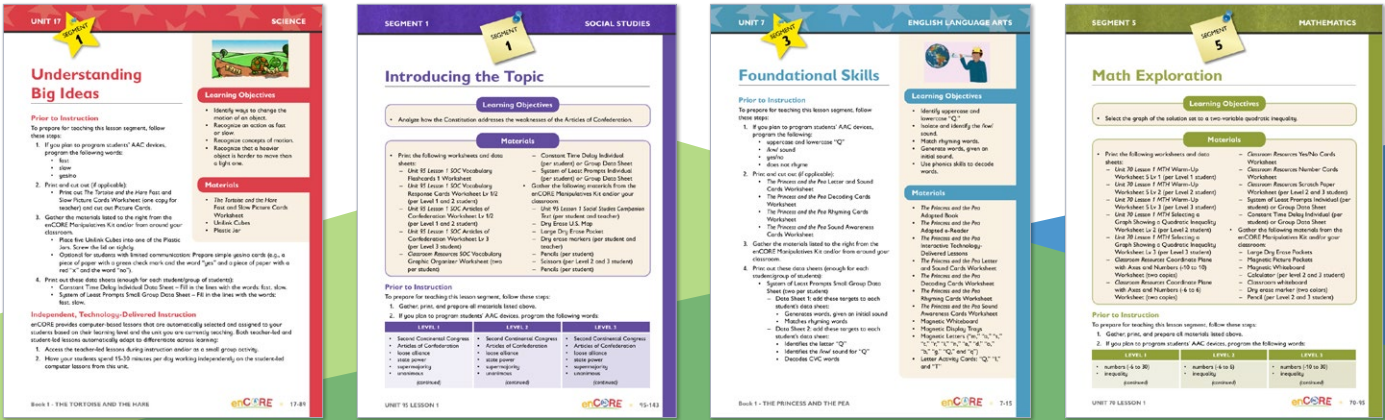
BE READY WITH SCRIPTED, DIFFERENTIATED LESSON PLANS

enCORE's comprehensive lesson plans make teaching easier for everyone — whether you're brand-new to the field or a seasoned pro. With built-in scripting and three levels of differentiation, you'll have the tools to meet every learner where they are. Lessons follow the Gradual Release of Responsibility model

('I Do, We Do, You Do'), helping students build confidence and independence as they tackle new skills. Plus, you'll find guidance for students who use AAC devices, ideas for extension and generalization, and so much more — everything you need to make every lesson count!

BRING LEARNING TO LIFE WITH HANDS-ON MATERIALS

enCORE is packed with multi-sensory, hands-on learning experiences that help new skills stick. From hard-copy literature books and student workbooks to math and science manipulatives, visual supports, and small group activities, students get plenty of ways to connect with what they're learning. With so many print-based and tangible materials, students not only build academic skills — they also strengthen social, emotional, and developmental connections with their teachers and peers.





COLLECT AND ANALYZE DATA WITH TECHNOLOGY-FACILITATED LESSONS

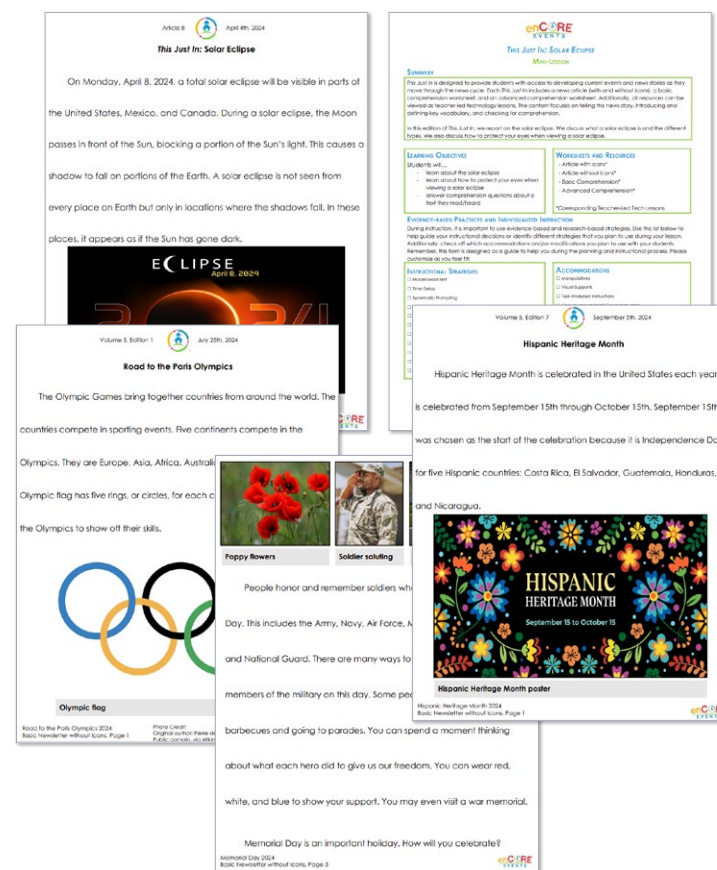
As a blended learning solution, we recognize the value of **responsive technology** in shaping individualized learning pathways. enCORE technology automates student data collection, ensuring each student has access to personalized instruction based on their demonstrated strengths and areas of need. Teachers who use enCORE may input student IEP goals and assign lessons specific to these goals to support progress monitoring efforts and keep parents informed. Technology lessons give teachers the ability to provide immediate feedback to students in 1:1, small group, or whole group settings, tracking student response in real time and adjusting the rigor accordingly.

SIMPLIFY PLANNING WITH DAILY IMPLEMENTATION GUIDES (DIGS)

Daily Implementation Guides (DIGs) make the day-to-day planning simple! The DIGs break down the unit's lesson plans day-by-day, outlining what to teach, how to use materials, and specific instructional steps. These guides ensure smooth implementation with or without support staff or for substitute lesson planning. DIGs also include corresponding teacher-led technology lessons, providing valuable data on student progress for progress monitoring and IEP development.

ENGAGE STUDENTS WITH ACCESSIBLE CURRENT EVENTS

enCORE Events are accessible news stories based on timely, real-world current events, such as Chinese New Year, the Super Bowl, and Women's History Month. Each current event topic includes a mini-lesson with a recipe and cross-curricular activities, along with materials and differentiated newsletters. *This Just In!* is designed to address national and global news stories that students may learn about in their everyday lives. enCORE Events and *This Just In!* provides the essential background knowledge and vocabulary necessary for students to be active consumers of mainstream media.



“

I've been using TeachTown's enCORE solution in my self-contained classroom for the last three years. Once I got set up, **the solution was easy-to-implement, logical and effective.** I love that all of the lesson plans repeat a pattern, with sequencing, comprehension and phonemic awareness. The manipulatives and workbooks allow for hands-on activity in the classroom, which also boosts student engagement. The scaffolding of the material has produced great results with my students.

Heather K.
Special Education Teacher, FL

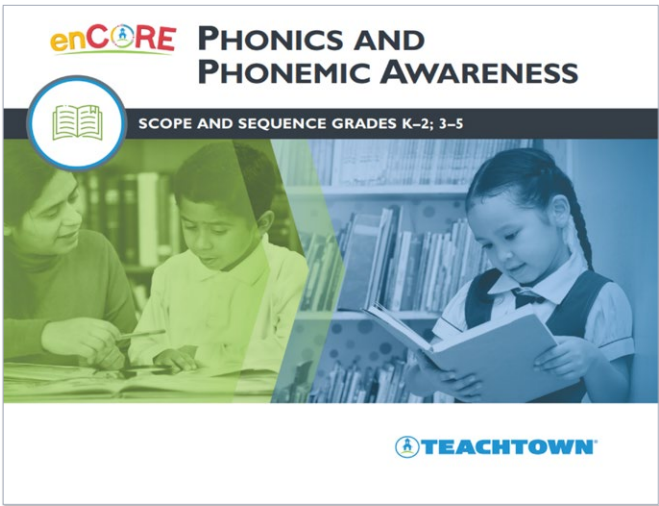
Deliver Evidence-Based Literacy Instruction with the Science of Reading

The five tenets of the Science of Reading are integrated and cohesive within the ELA domain of enCORE.



PHONEMIC AWARENESS

enCORE includes age-appropriate phonemic awareness activities to support students learning to identify and manipulate individual sounds in words. Includes rhyming skills and follows a developmental progression.



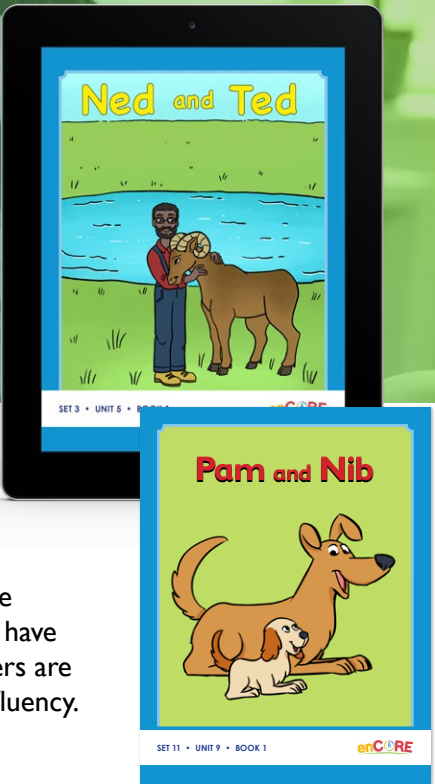
Ask us about our Phonics and Phonemic Awareness Scope and Sequence!

PHONICS

Each unit contains phonics instruction, beginning with single sound-letter correspondence, short vowels, digraphs, initial and final blends, common flections and silent 'e, progressing to vowel teams, vowel digraphs, r-controlled vowels, word patterns, and the most common prefixes and suffixes, and moving toward decoding and spelling.

FLUENCY

Repeated readings are embedded in the enCORE implementation guide within every unit, giving students the opportunity to read the literature from the e-Reader OR have the e-Reader read to them. Additionally, decodable readers are included for every enCORE Elementary Unit to support fluency.

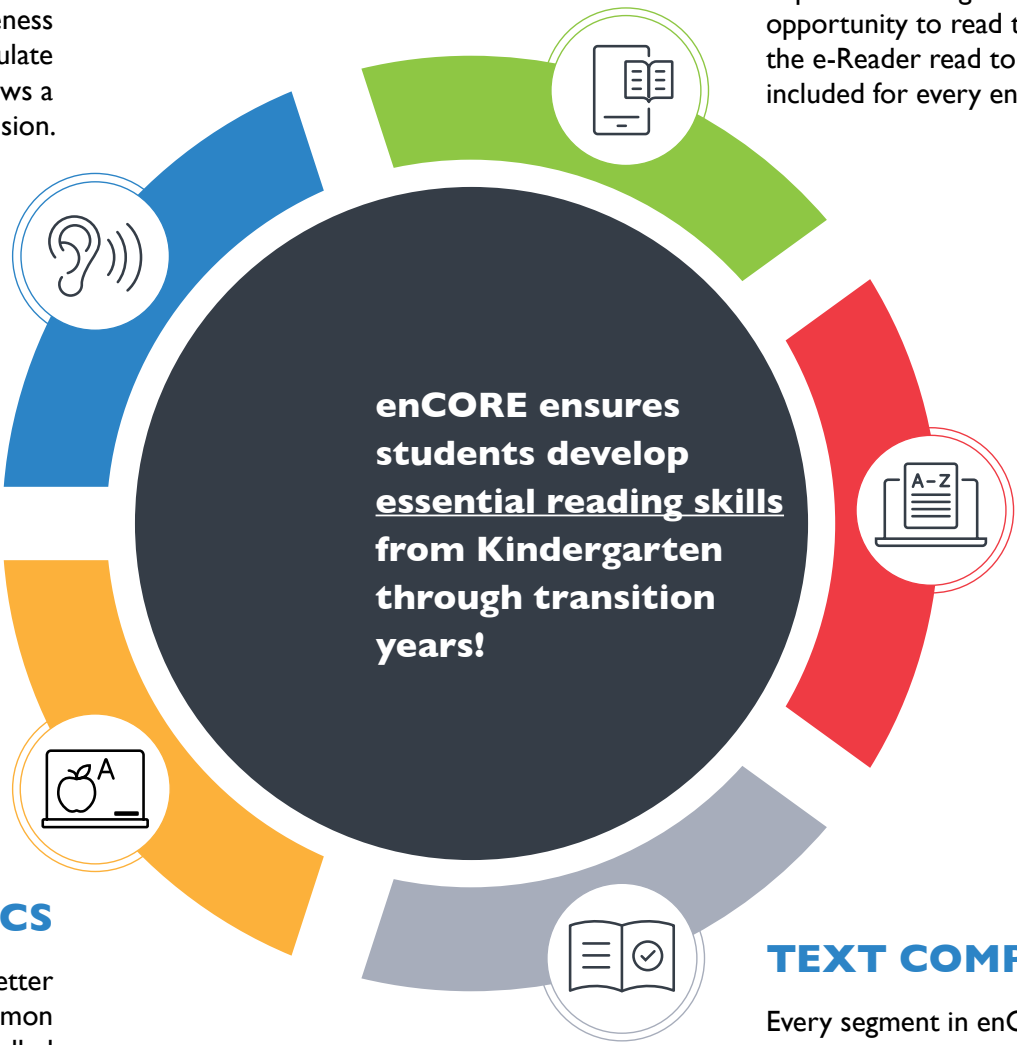


VOCABULARY

Every unit of enCORE focuses on vocabulary that is embedded within that unit's literature. The vocabulary targets were chosen to be useful for students in daily situations and to help with comprehension of the text. The vocabulary words are embedded in the text multiple times so that students have multiple opportunities to engage with the words and develop deeper semantic knowledge. Vocabulary instruction is incorporated into the teacher lesson plans, as well as within the technology lessons in order for the students to have repeated exposures.

TEXT COMPREHENSION

Every segment in enCORE begins with anchored instruction to help students connect information in the text to their daily lives or to build background knowledge prior to reading. Each book, companion text, and/or chapter incorporates multiple comprehension activities to address text comprehension standards.



¡APRENDAMOS JUNTOS!

Spanish Resources to Support Literacy Development for Spanish Speakers

With adapted literature and instructional materials available in both Spanish and English, you'll have what you need to meet students where they are now and build vocabulary, fluency, and comprehension skills.

Equip your special educators with tools to reach more students, including students with moderate to severe disabilities whose families speak Spanish in the home setting. With instructional materials in both English and Spanish, educators can:

Strengthen Partnership with Families

The printable PDFs can provide families with accessible opportunities to engage in curriculum content.

Bridge Learning Gaps

Equip students with content in their preferred language, helping them build confidence and comprehension.

Promote Equity

Ensure every learner has access to quality resources that meet their individual learning needs.

Boost Student Engagement

Create an inclusive environment where students feel seen, supported, and ready to succeed.



ENCORE ELEMENTARY OFFERS SPANISH CONTENT RESOURCES, INCLUDING:

Adapted library books in Spanish in multiple format and practice opportunities for each book, including vocabulary flashcards and comprehension activities.



Hard Copy



e-Readers



Printable PDFs



Book Read-Aloud Videos

EXTENDED SCHOOL YEAR (ESY) IS INCLUDED

enCORE Extended School Year (ESY) is a flexible, engaging **4-week curriculum** aligned to state standards that covers ELA, math, science, and social studies for K–12. Designed to help students maintain essential skills throughout the summer and support IEP goals, enCORE ESY is flexible, fun, and engaging for students. It includes:

- Weekly newsletters
- Mini-lessons
- Worksheets
- Recipes and science experiments
- Teacher- and student-led technology-based lessons



“

My son's life changed forever. My practically nonverbal son, who had been learning the same thing repeatedly for years, suddenly showed that he knew more than what anybody could imagine. In more than a year my son can now read, spell simple words, answer yes/no, can do simple addition and subtraction, count money, time and much more. Just because he was not able to talk, or answer, didn't mean that he didn't know the answers....TeachTown was so amazing for my son.

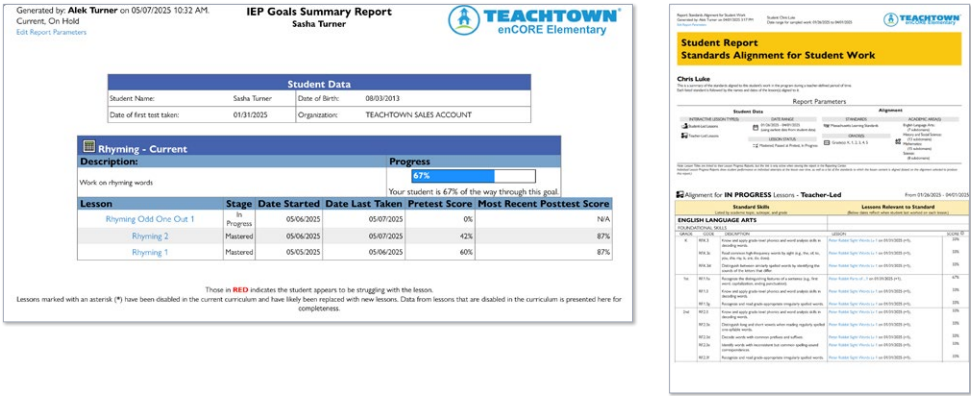
S.D., Parent

Proven Impact for Students, Teachers, and Districts

enCORE delivers measurable outcomes that matter. With standards-first, adapted core curriculum designed for students with moderate to severe disabilities, enCORE equips educators with the tools they need to deliver meaningful, individualized instruction. Administrators gain confidence knowing instruction is aligned, data-informed, and accessible. Teachers save time with ready-to-use materials and built-in progress monitoring to support IEP goal formation and tracking.

Importantly, students thrive — demonstrating, on average, nearly **70% growth** from pre-test to post-test across instructional domains.

Special education professionals can run reports at any time to analyze student progress, monitor growth toward IEP goals, assess mastery of specific learning objectives, and more. The reports provide a great way to share progress with families and support the home-to-school partnership. Here's a snapshot of what some of these reports look like:

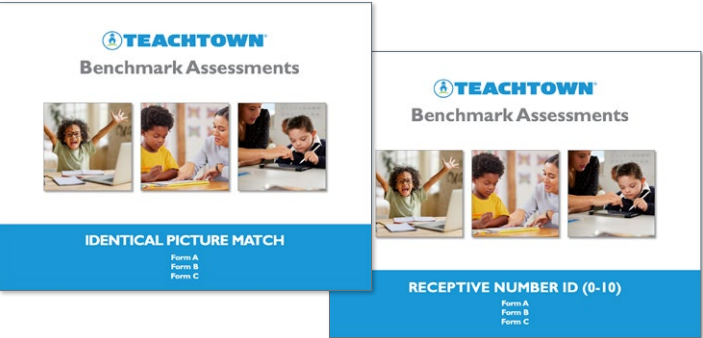


Measure Student Progress Over Time with TeachTown Benchmark Assessments

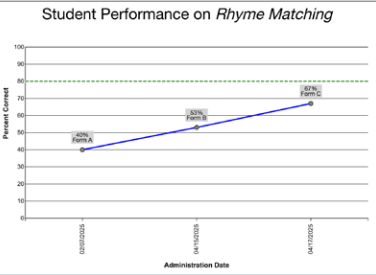
Available in enCORE Elementary, Middle, and High School

TeachTown Benchmark Assessments are designed to help you monitor student progress on individual skills over time and measure growth effectively. Track student progress on state-aligned standards throughout the school year, empowering data-driven decisions for personalized and effective curriculum planning.

- TeachTown Benchmark Assessments offer over 270+ assessments across ELA, Math, and Early Learning skills.
- Available in multiple formats: printable PDFs, teacher-facilitated and student-led technology lessons.
- Each assessment includes three versions (A, B, C) to maintain validity when students retest on a skill.
- Detailed reports provide raw scores, percentages, and item analysis, linking directly to enCORE units that support student skill development.



Plus, they seamlessly connect you to the specific unit in enCORE where you can turn to target instruction and accelerate student progress!

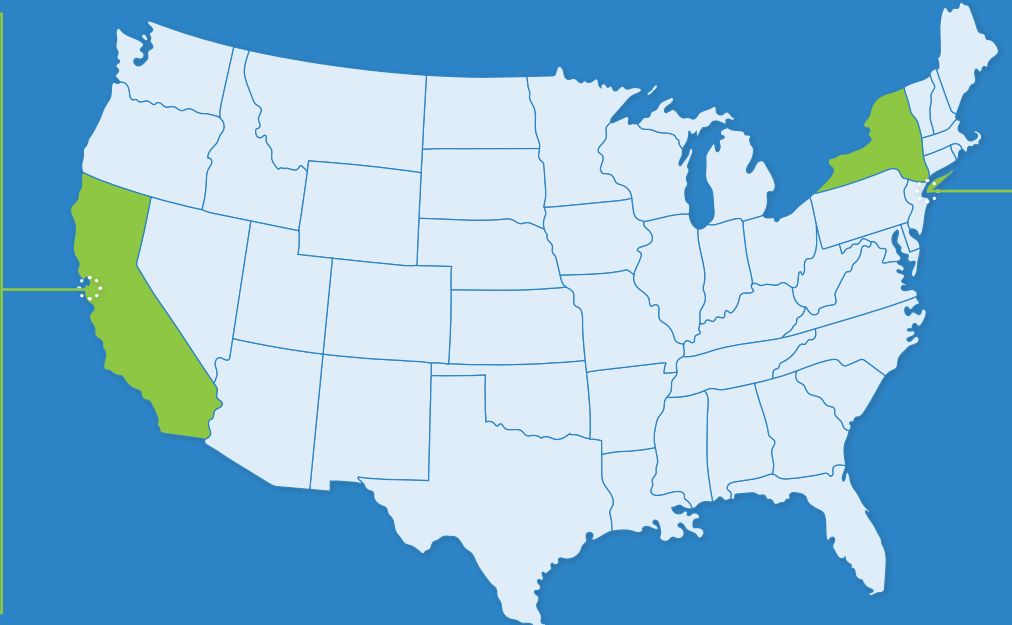
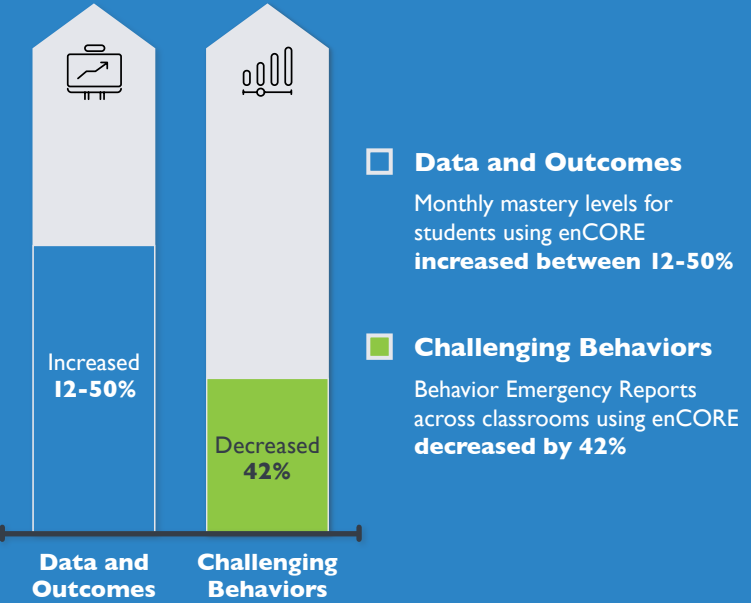


INNOVATION FROM COAST TO COAST

All across the U.S., districts are seeing measurable growth. At TeachTown, we let the numbers speak for themselves.

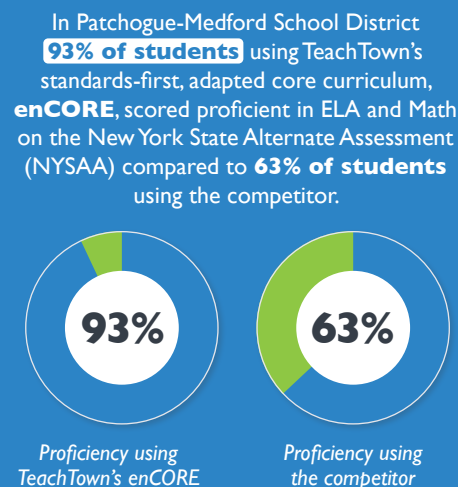
CALIFORNIA SPOTLIGHT

The San Mateo County Office of Education reported a notable rise in monthly mastery levels alongside a significant drop in challenging behavior.



NEW YORK SPOTLIGHT

In Patchogue-Medford School District in New York, students who had access to enCORE outperformed students who used the competitor across ELA and Math.



*A student is required to score a level 3 or 4 to meet NYSAA standards and be considered proficient.

Built-in Accessibility, Designed for Every Learner

“

We'd searched for a 'miracle' program that satisfies the requirements of all stakeholders: engaging and effective for students, **comprehensive and easy to use for teachers, aligned with state standards, and simple to share progress with families.** Clairview School staff trialed a few different programs. TeachTown provided all of the desired components.

Dr. Rebecca McGee, Principal
Clairview School

At TeachTown, accessibility is built right into enCORE. Our platform supports students who use AAC devices, including mechanical switches, with native scanning technology that works across any device or operating system. Whether learning through paper-based materials, digital lessons, or hands-on activities, every student can engage, participate, and grow.

BUILT-IN SUPPORTS FOR ALL LEARNERS:

- Scanning technology that supports switch access on any operating device
- AAC-friendly curriculum with guidance on programming high-priority vocabulary
- Text-to-speech (e-reader) for literature access
- Extended response time in technology-based activities
- Flexible learning formats: paper-based and digital options
- Hands-on learning with physical manipulatives

And more!

The enCORE Difference

Teachers Say...

- ✓ The comprehensive curriculum makes the job feel sustainable.
- ✓ enCORE frees up time to focus on 1:1 time with students, build relationships, and think creatively about how to meet all students' needs.
- ✓ For the first time, students have equitable and inclusive access to grade-level content.
- ✓ Data-informed instruction means students are getting the personalized interventions they need.
- ✓ Communication between school and home improves as caregivers see increased engagement and excitement for learning.

Admins Love...

- ✓ White glove support services, professional development opportunities, and instructional coaching.
- ✓ Alignment to state standards.
- ✓ Evidence-based teaching strategies, including the principles of ABA, the Science of Reading, and systematic, explicit instruction.
- ✓ Supports compliance and decreases threat of litigation.
- ✓ Clear focus on measurable student outcomes.
- ✓ Teacher morale is up because their job is more sustainable.

Students Notice...

- ✓ Lesson materials, manipulatives, and adapted reading library books are engaging.
- ✓ Increased self-confidence with learning materials that mirror what their peers in general education see.
- ✓ Adapted content matches their developmental level and reinforces that their voice matters.
- ✓ They are preparing to meaningfully participate in the community and increased independence.
- ✓ Learning is individualized, just like the goals on their IEPs.



Learn more about our
K–12+, standards-first
adapted core curriculum by
scanning the QR code:

